

HARKER • MARTIN • STAINES • WENTZ
THE MARTIN ARCHITECTURAL GROUP
ARCHITECTS AND LAND PLANNERS

215-665-1080
240 NORTH 22ND STREET
PHILADELPHIA, PENNSYLVANIA 19103

**forming new solutions,
designing new environments**



traditional, familiar forms attract
ACTIVE ADULT MARKET
and keep neighborly resistance at bay

108 UNITS-5.8 acre site for adult market

unit A

includes:
1 BR/DEN
900 sq. ft.
11 per bldg.

unit B

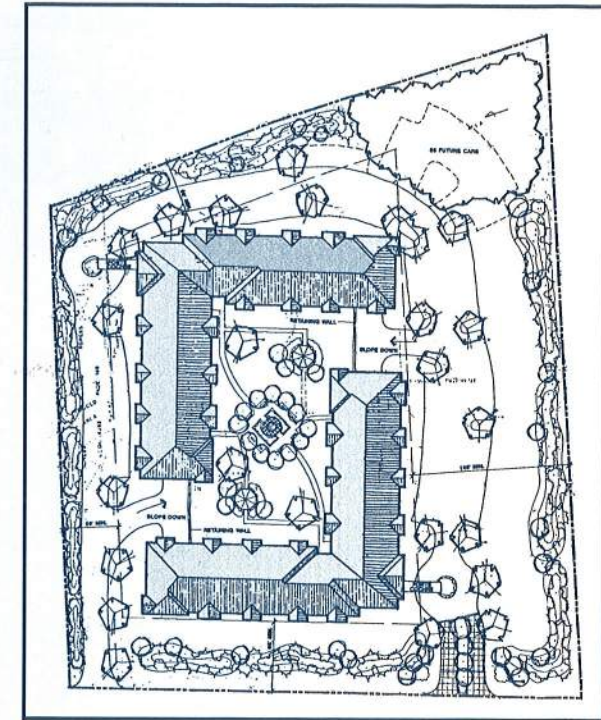
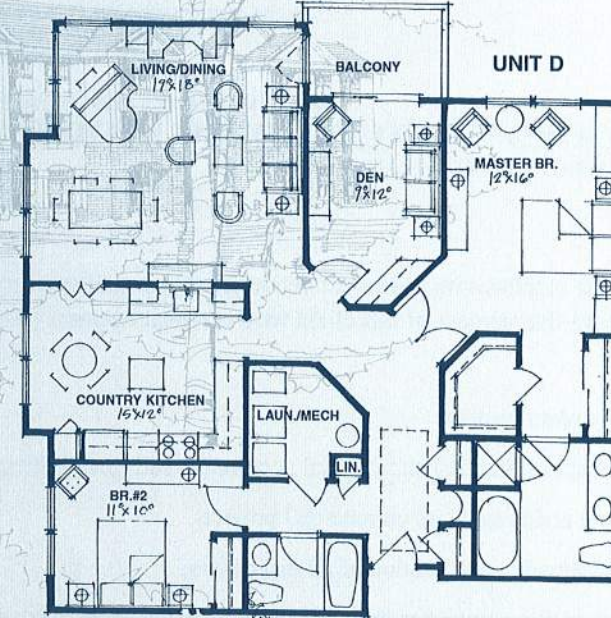
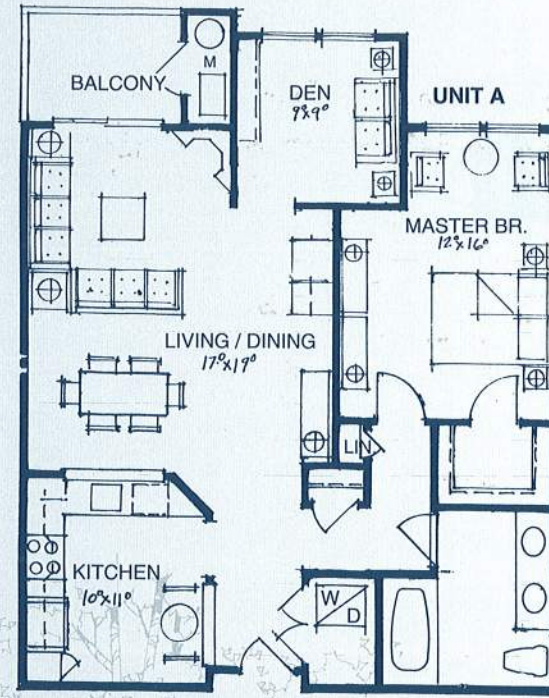
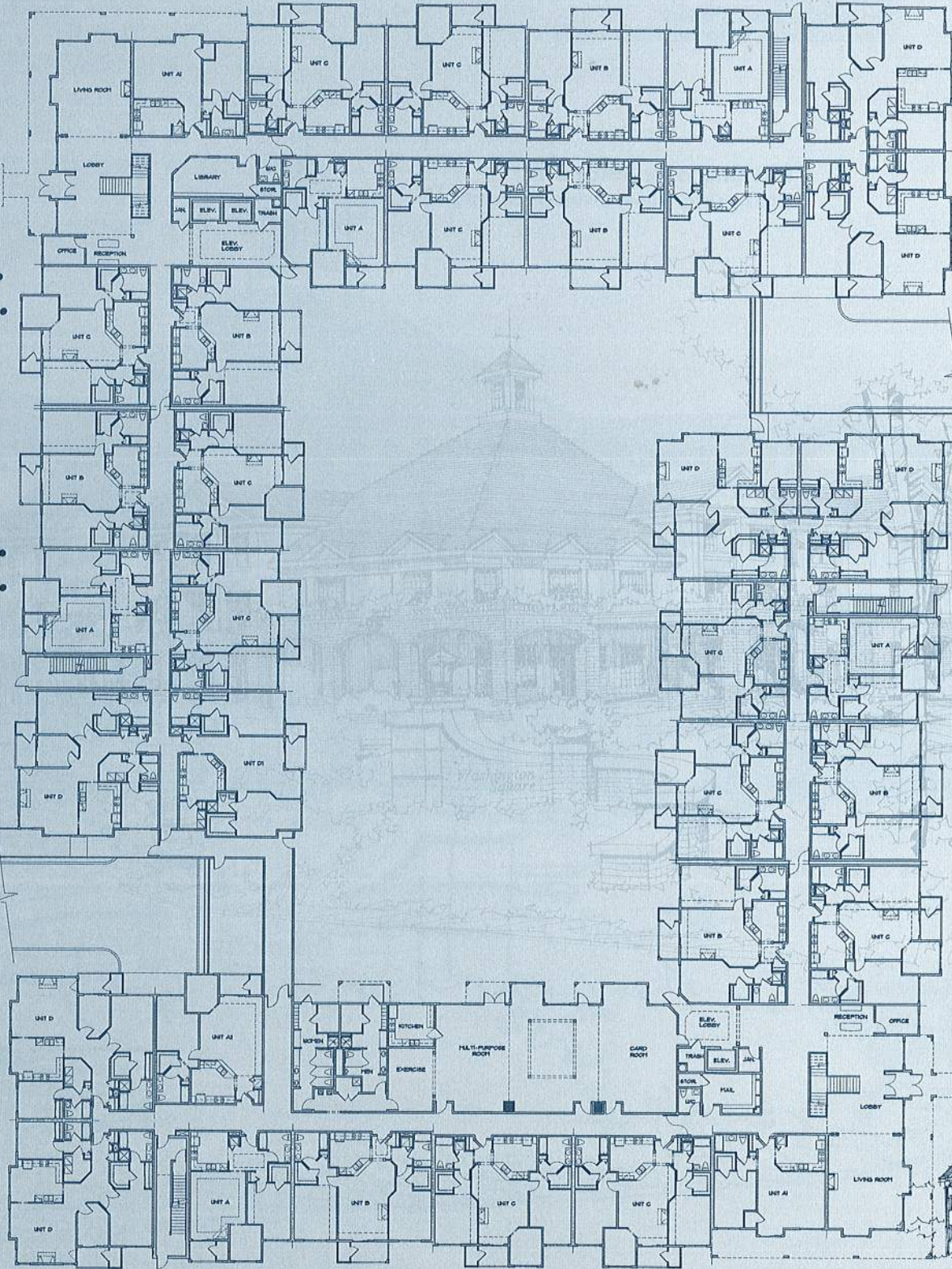
includes:
2 BR
1200 sq. ft.
34 per bldg.

unit C

includes:
2 BR/DEN
1250 sq. ft.
3 per bldg.

unit D

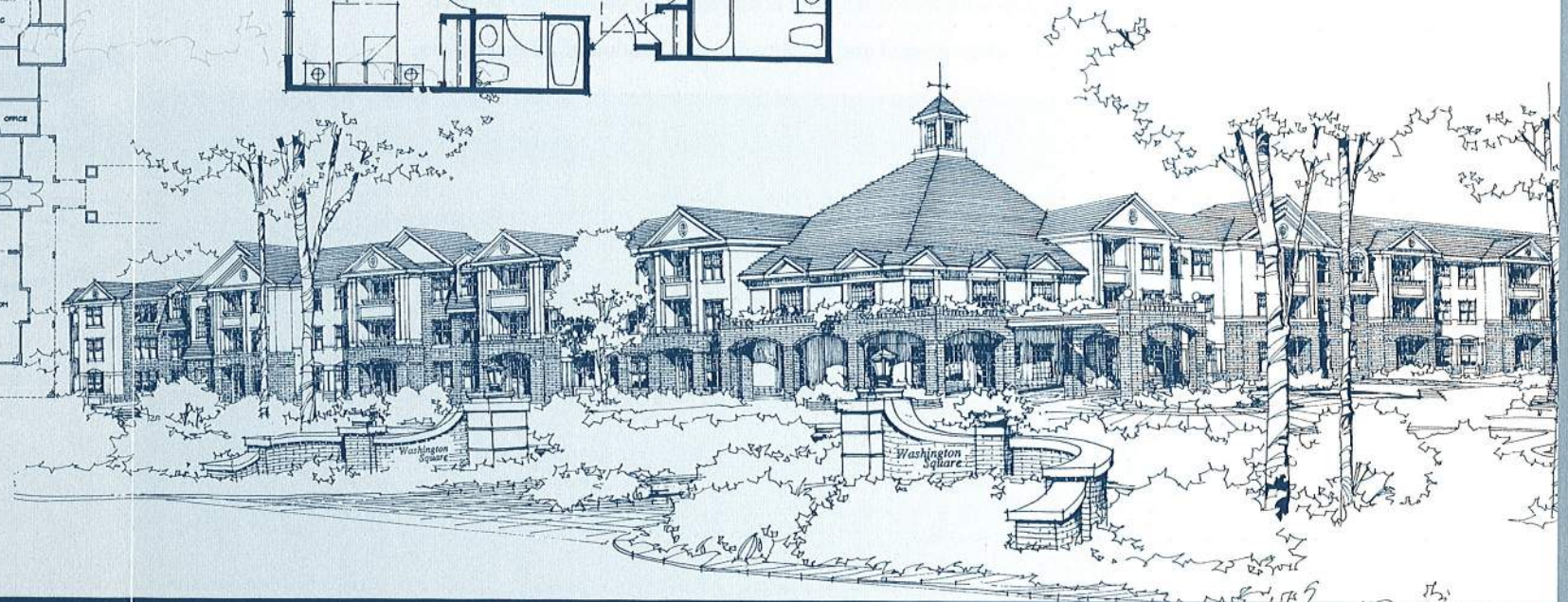
includes:
2 BR/DEN
1400 sq. ft.
6 per bldg.



Spacious units, lots of green
 and still over 18.6 DU/A

Total of 108 Active Adult residences on tight 5.8
 acre suburban site in single-family neighborhood.
 Over half of parking (120 spaces) tucked under
 buildings for optimum landscape treatment.

For additional information on this and other
 pro-active designs for multi-family living, contact
The Martin Architectural Group in Philadelphia
 at 215-665-1080. Or see the whole story at
www.MartinAIA.com.



*All designs of The Martin Architectural Group are protected by copyright 1999.

forming new solutions, designing new environments

A series of contemporary planning & design
 concepts for a diversity of attached markets

multi-family