

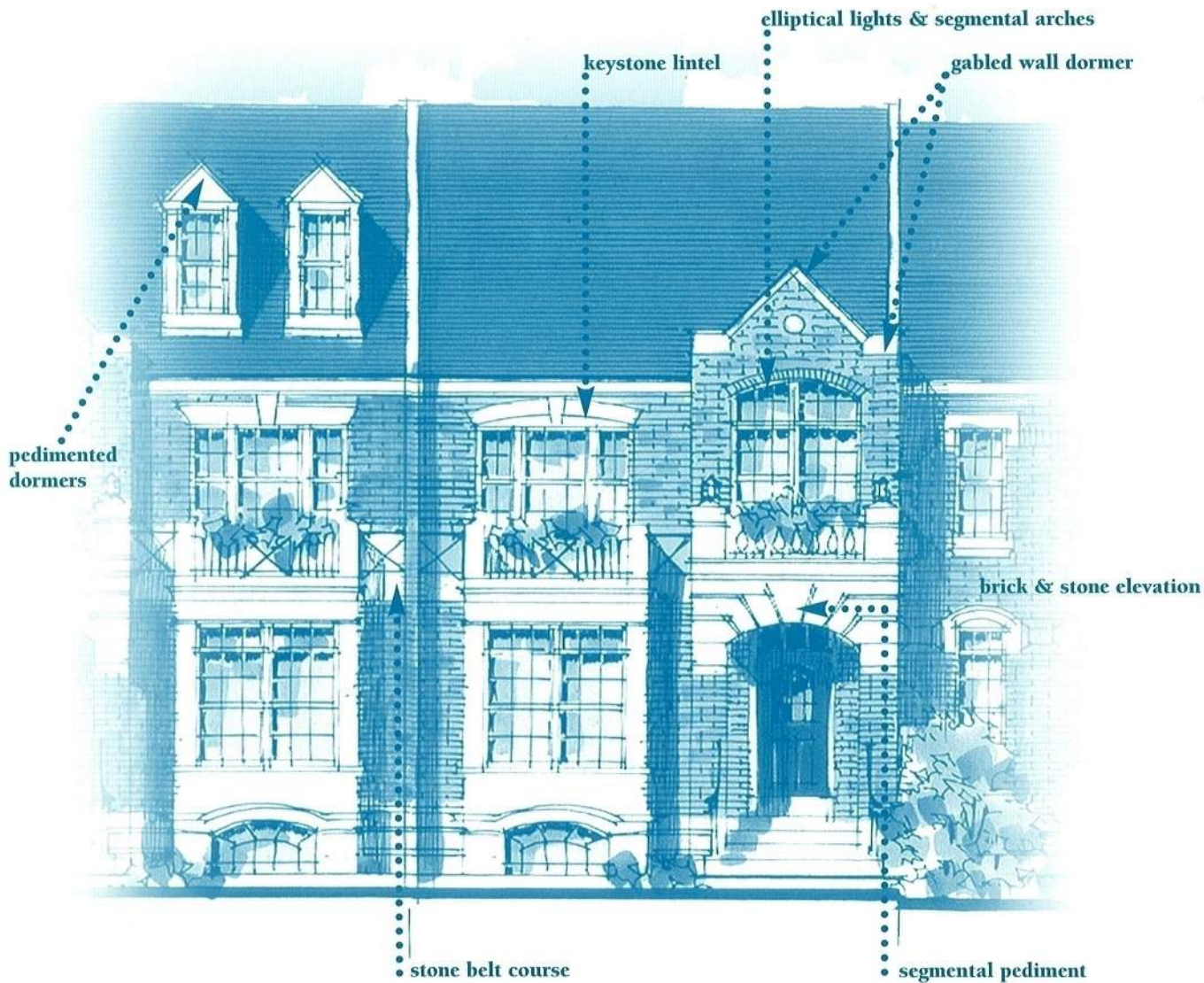


HARKER•MARTIN•WENTZ•SULLIVAN•RIVIELLO  
**THE MARTIN ARCHITECTURAL GROUP**  
ARCHITECTS AND LAND PLANNERS

215-665-1080  
240 NORTH 22ND STREET  
PHILADELPHIA, PA 19103

561-417-2870  
855 SOUTH FEDERAL HWY, SUITE 218  
BOCA RATON, FL 33432

**forming new solutions,  
designing new environments**



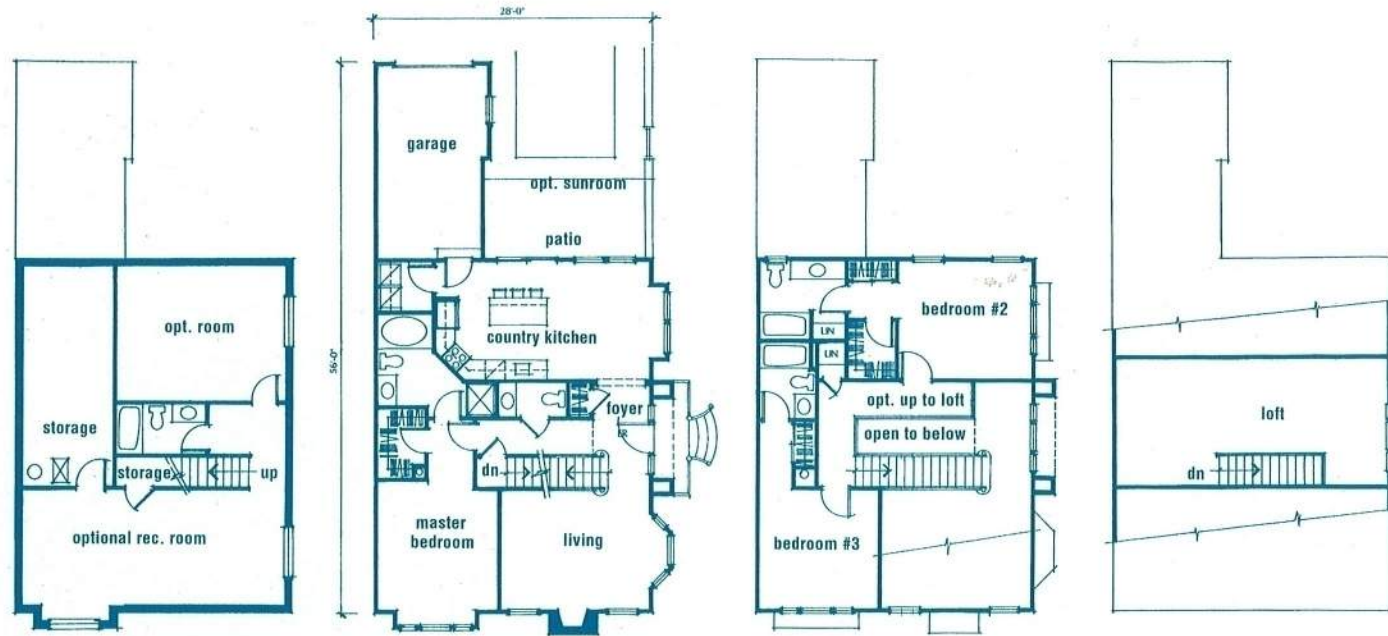
in-fill demands  
**CLASSICAL DETAILS**  
for historic planned community



# High design for community's last prime site

Cast stone and brick facades speak directly to the market and to the constraints of the site. Carrying these details into site walls helps to screen alleys and parked cars from the main thoroughfare tying the whole community together into a distinctive upscale neighborhood.

For additional information on this and other pro-active designs for multi-family living, contact The Martin Architectural Group in Philadelphia at 215-665-1080. Or see the whole story at [www.MartinAIA.com](http://www.MartinAIA.com).



**TH 1728:** 3BR / 28' end townhome, master down, loft option



side elevation TH 1728 :  
shown with full brick end option

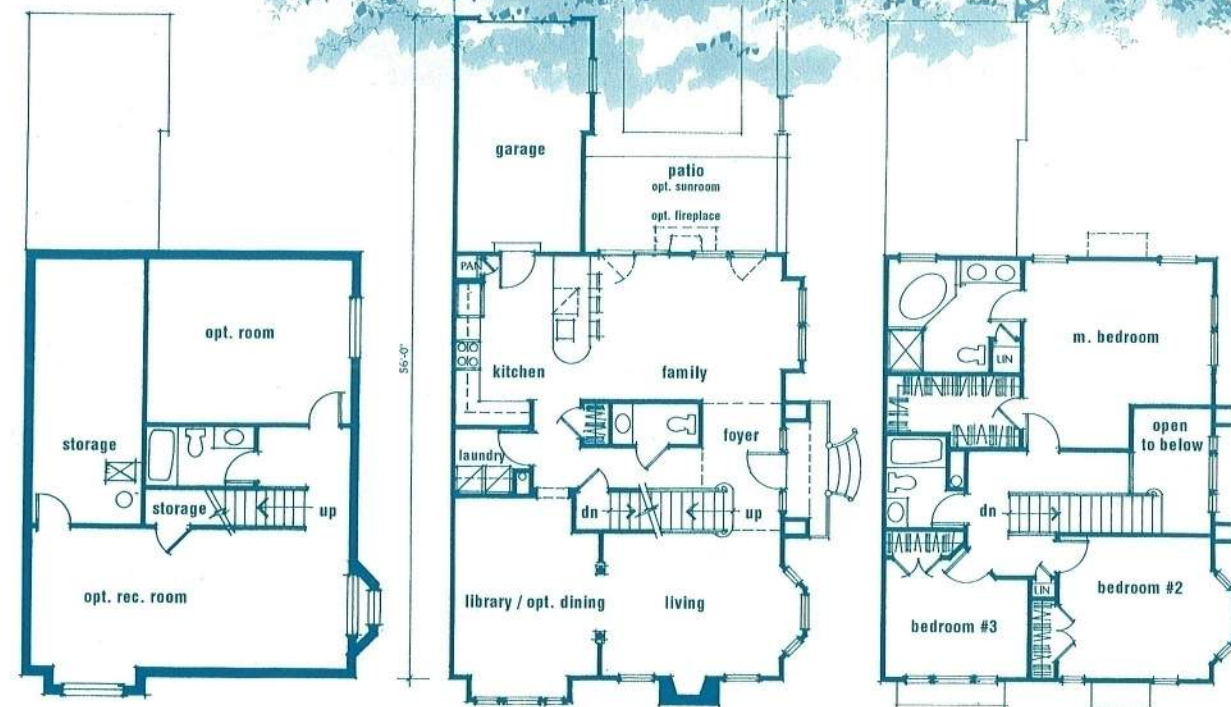


side elevation TH 1956:  
shown with full brick end option

\*All designs of The Martin Architectural Group are protected by copyright 2000.



**TH 1870:** 3BR / 24' interior townhome, master bdrm suite, sunroom option



**TH 1956:** 3BR / 28' end townhome, formal center hall, sunroom option

A series of contemporary planning & design concepts for a diversity of attached markets

multi-family

forming new solutions, designing new environments