



HARKER·MARTIN·WENTZ·SULLIVAN·RIVIELLO  
**THE MARTIN ARCHITECTURAL GROUP**  
ARCHITECTS & LAND PLANNERS

215-665-1080

240 NORTH 22ND STREET  
PHILADELPHIA, PA 19103

561-417-2870

855 S. FEDERAL HWY, SUITE 218  
BOCA RATON, FL 33432

forming new solutions,  
designing new environments

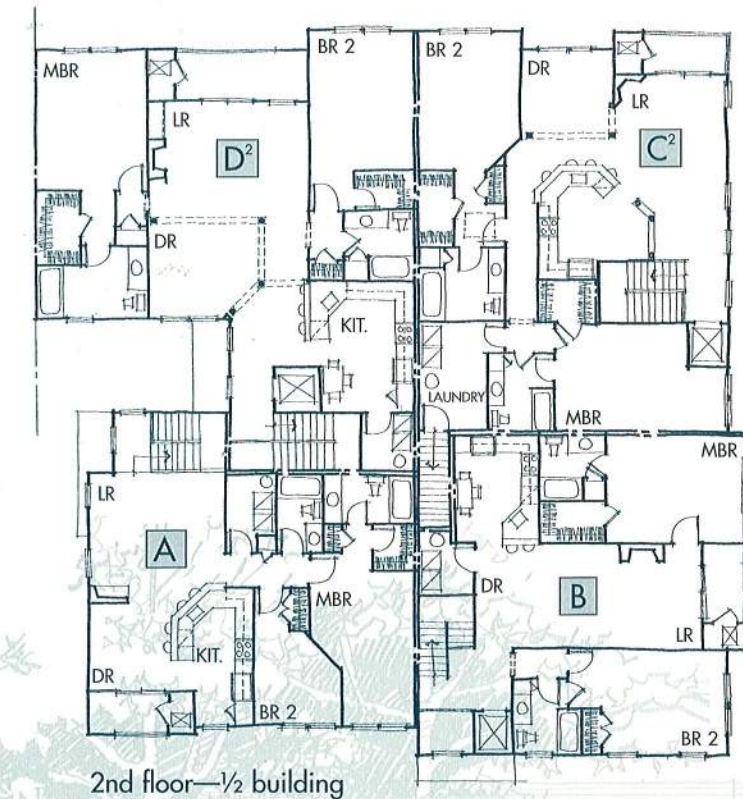
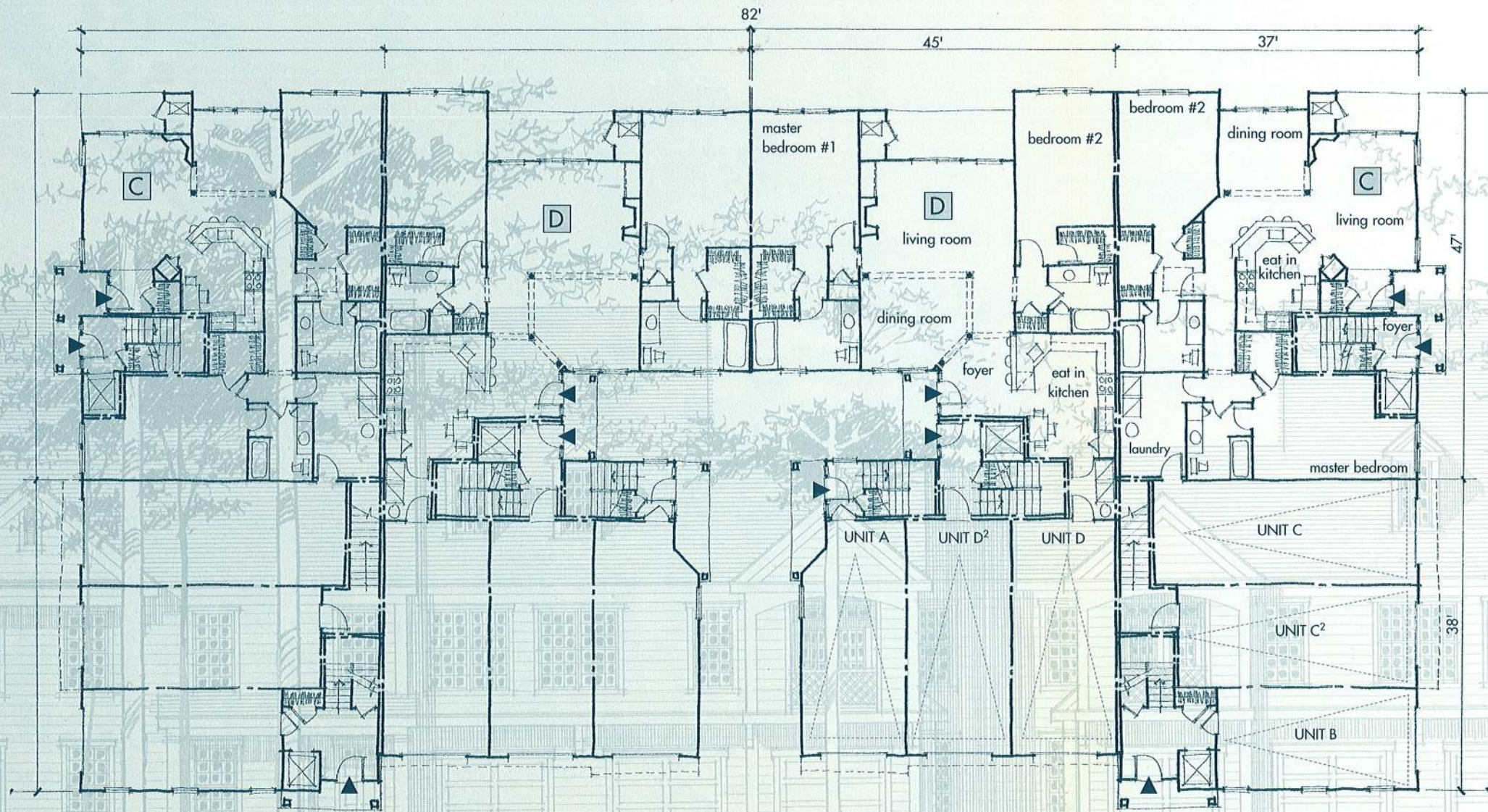


every residence is **prime** and **secure** as  
**COMPACT COURTYARD LIVES LARGE**  
with **generous** plans, **direct-access** garages

# Two-story stacked flats yield an honest 10 DU/Ac with room to spare

At build-out, this new community of 178 residences offers two basic product types for 33-acre (net) irregularly configured in-fill parcel. Eight twelve-plex buildings (shown here) match with duplexes clustered throughout the rest of the site, giving the developer good over-all density, smooth phasing, generous open space and broader active-adult product/market appeal.

For additional information on this and other pro-active designs for multi-family living, contact The Martin Architectural Group in Philadelphia at 215-665-1080 or in Boca Raton at 561-417-2870. Or see the whole story at [www.MartinAIA.com](http://www.MartinAIA.com).



## 12 UNIT PROTOTYPE (shown):

- General footprint of 164'x85'
- Secure direct-access garage for each unit
- UNIT A: 1182 SF, 2BR/2BA, elevator standard
- UNIT B: 1504 SF, Dual Master, elevator standard
- UNIT C: 1518-1650 SF, Dual Master, formal dining, elevator standard for second floor
- UNIT D: 1586-1754 SF, Dual Master, formal dining, elevator standard for second floor

- also developed for the site was an 8-UNIT PROTOTYPE (not shown):
- General footprint of 124'x85'
- Secure direct-access garage for each unit
- UNIT E: 1326 SF, 1BR/1BA, formal dining, first floor only
- UNIT F: 1528 SF, Dual Master, formal dining, first floor only
- UNIT G: 1840 SF, Dual Master, formal dining, elevator standard
- UNIT H: 2055 SF, Dual Master/Den, formal dining, elevator standard

\*All designs of The Martin Architectural Group are protected by copyright 2003.