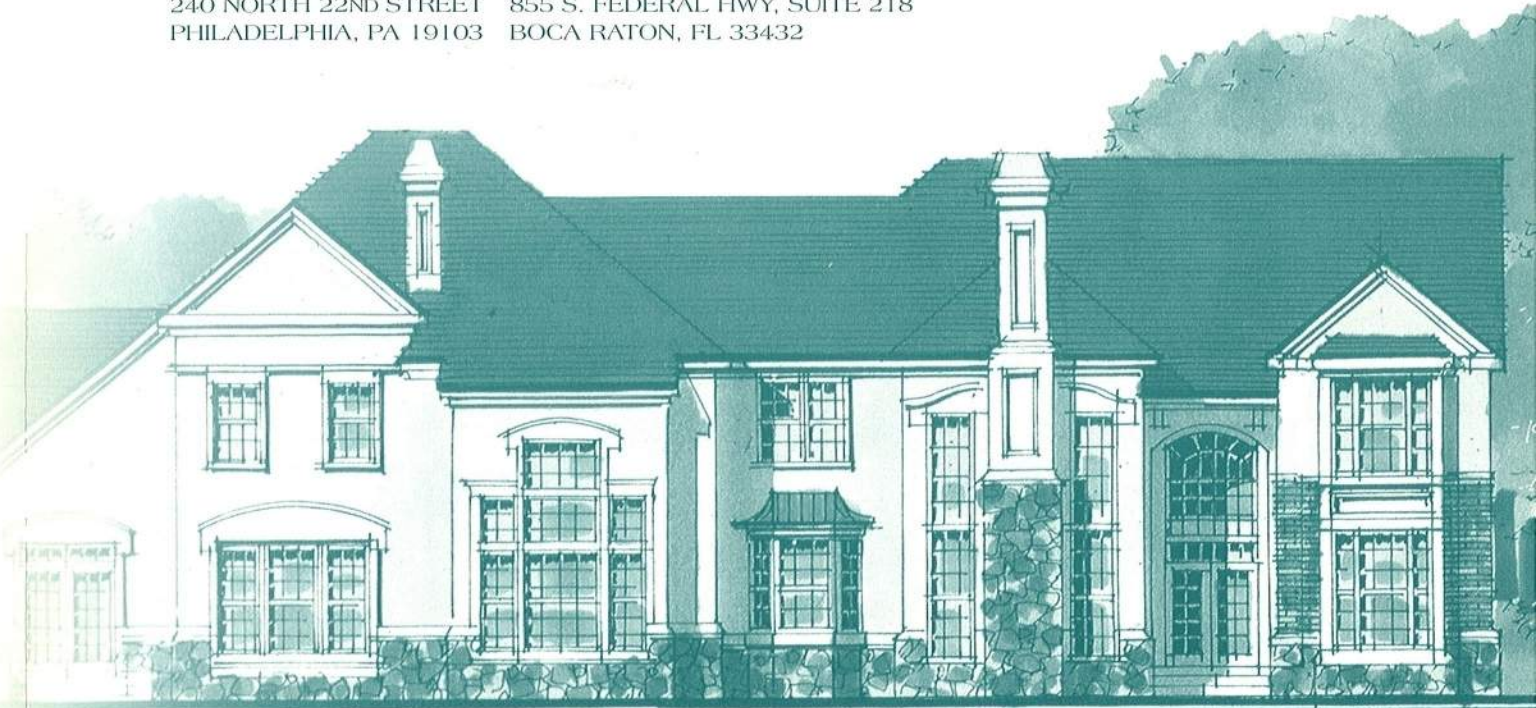




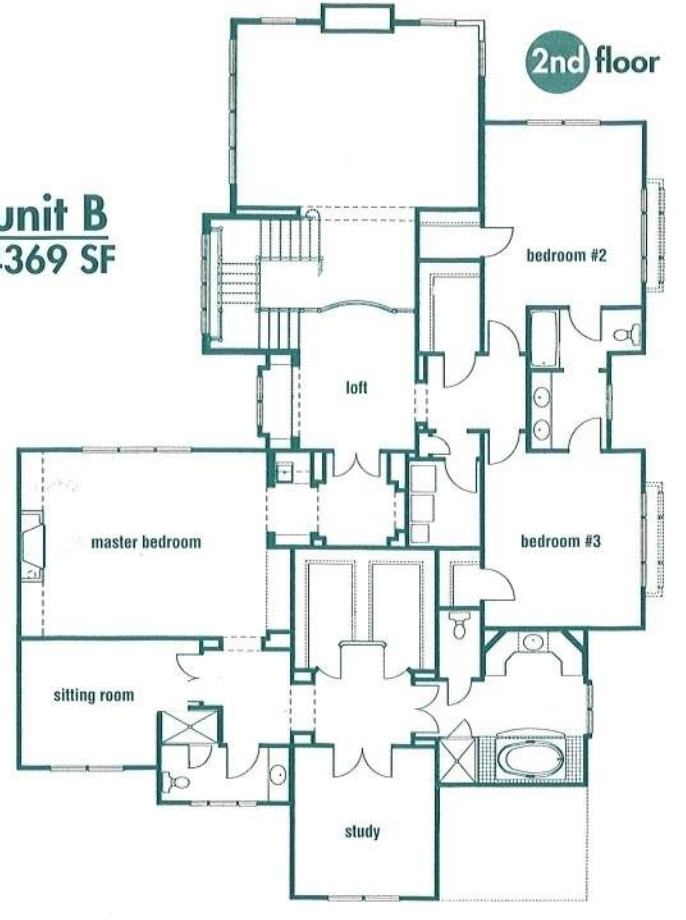
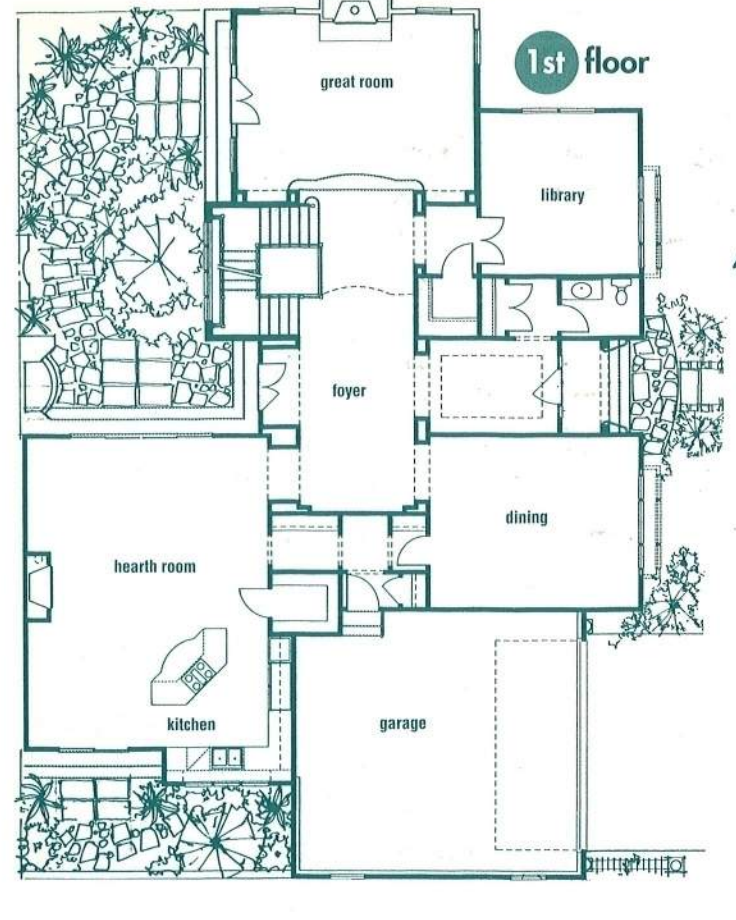
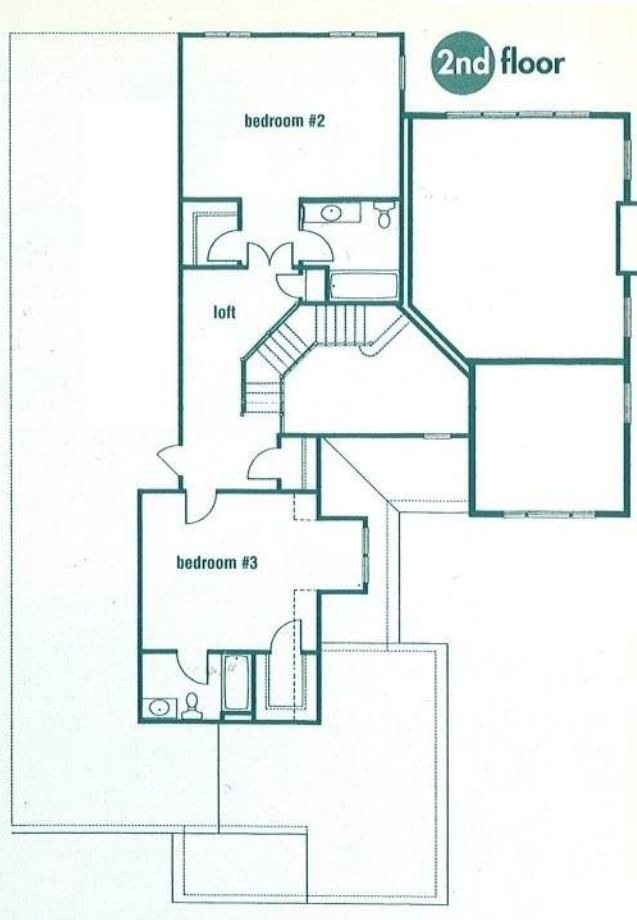
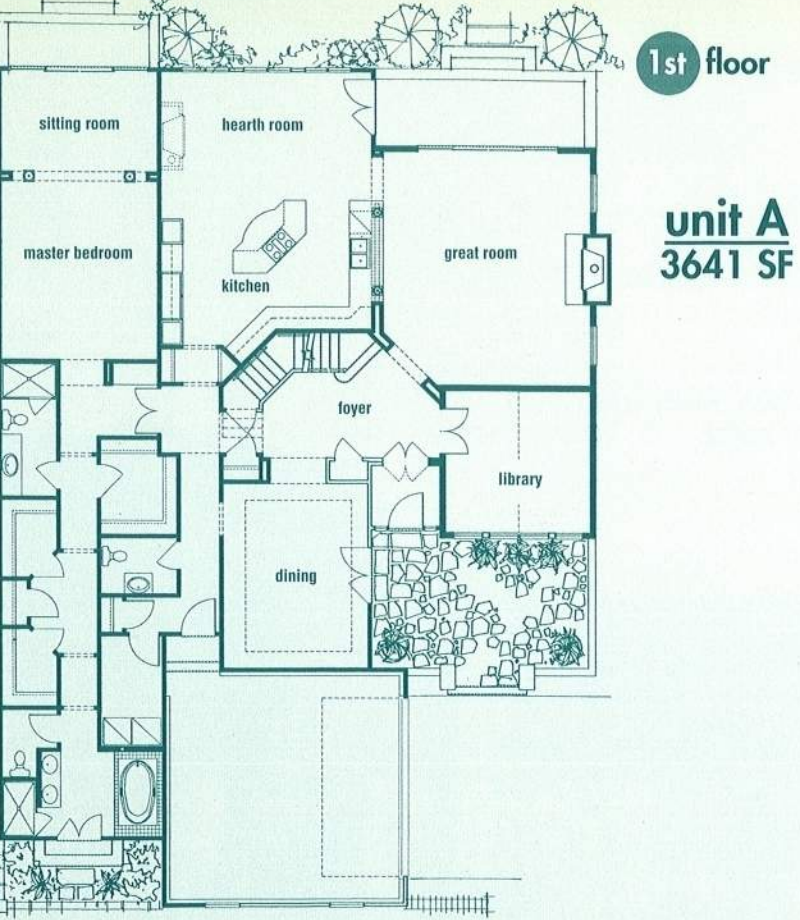
HARKER•MARTIN•WENTZ•SULLIVAN•RIVIELLO
THE MARTIN ARCHITECTURAL GROUP
ARCHITECTS & LAND PLANNERS

215-665-1080 561-417-2870
240 NORTH 22ND STREET 855 S. FEDERAL HWY, SUITE 218
PHILADELPHIA, PA 19103 BOCA RATON, FL 33432



**forming new solutions,
designing new environments**

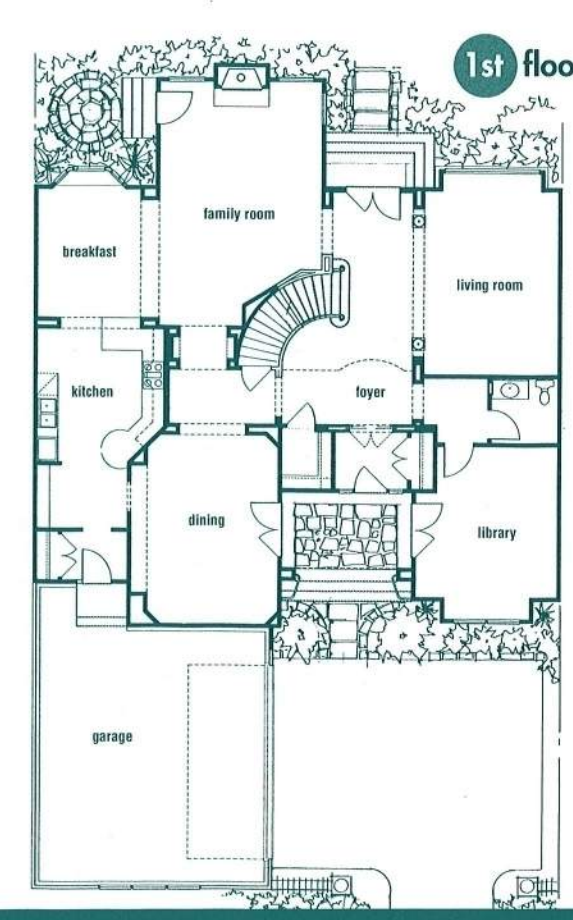
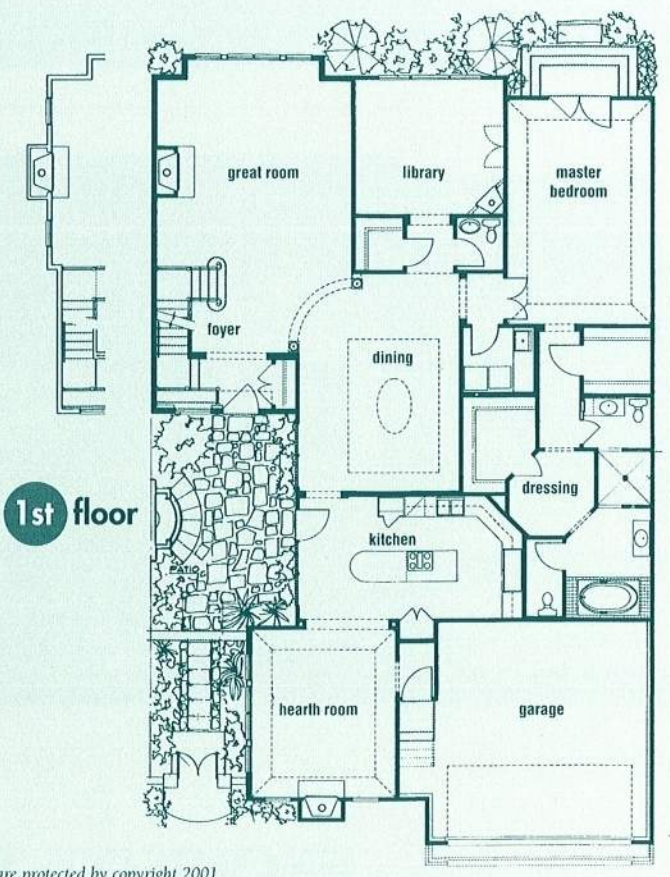
executive lifestyle:
EXQUISITE TOWNHOMES
grand scale, proportion, details and taste



Exclusivity for the champagne taste with the champagne budget

This 25-acre / 68-unit townhome community is located in one of the wealthiest New Jersey suburbs of New York City. The market's expectation is only of the best, and that is what these plans deliver: single-family privacy, magnificent master suites and space for the full executive lifestyle. For additional information on this and other proactive designs for multi-family living, contact:

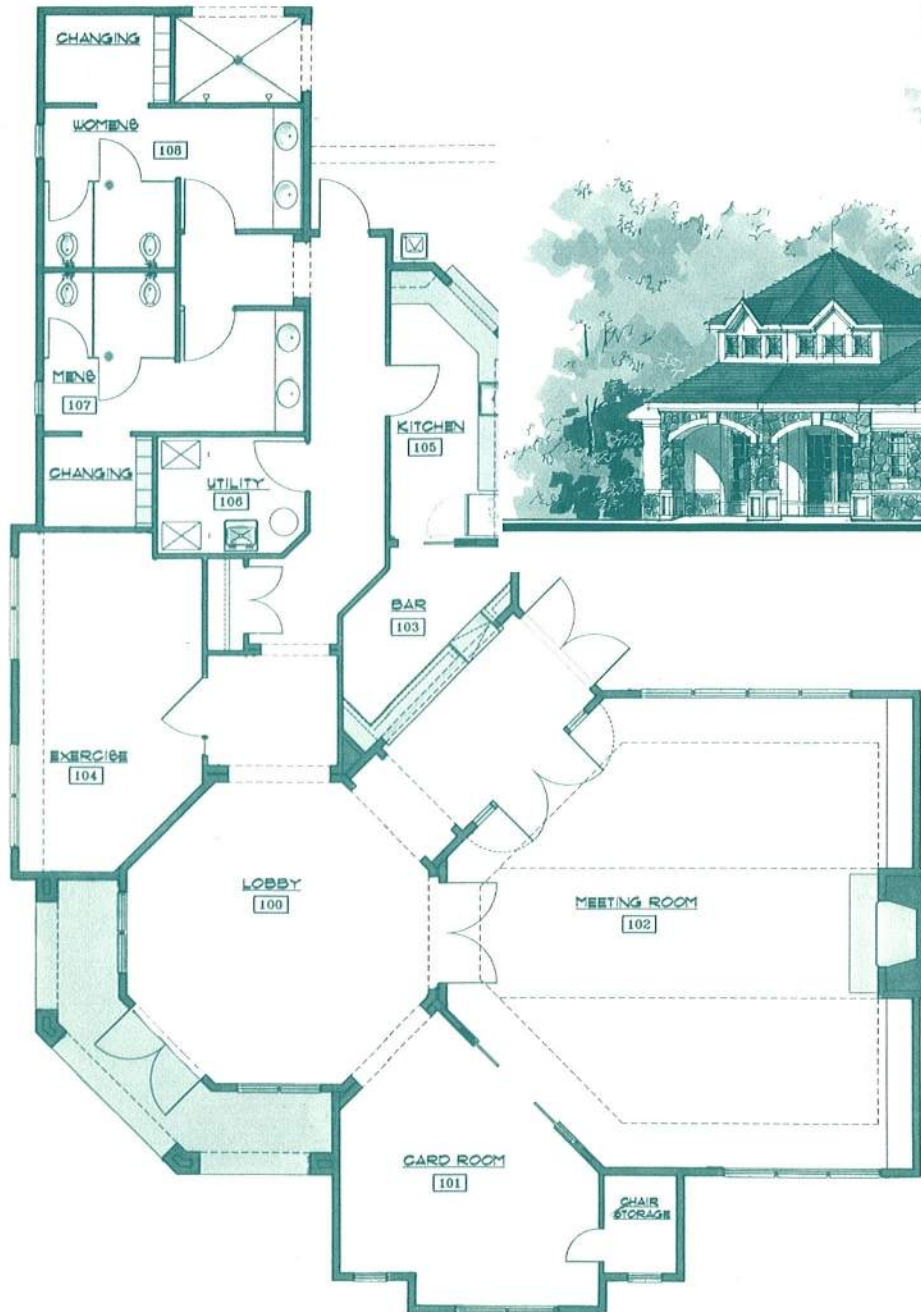
The Martin Architectural Group in Philadelphia at 215-665-1080, or in Boca Raton, Florida at 561-417-2870. Or see the whole story at www.MartinAIA.com.



*All designs of The Martin Architectural Group are protected by copyright 2001.

A series of contemporary planning & design concepts for a diversity of attached markets

Site Amenities



gatehouse security



clubhouse design / community center

The Martin Architectural Group incorporates into its planning and design commissions a *total community theme environment*. We provide all of the elements that add harmony, identity and value to technical planned residential developments. Whether elegant, distinctive clubhouses like this community's 5000 SF gem or larger scale streetscape and amenity packages, we provide the industry's leading quality of service and hence, quality of built community.



HARKER-MARTIN-WENTZ-SULLIVAN-RIVIELLO
THE MARTIN ARCHITECTURAL GROUP
ARCHITECTS & LAND PLANNERS

215-665-1080 561-417-2870
240 NORTH 22ND STREET 855 S. FEDERAL HWY, SUITE 218
PHILADELPHIA, PA 19103 BOCA RATON, FL 33432

A series of contemporary planning & design concepts for a diversity of attached markets

Site Planning

The market for these townhomes has conservative tastes. The site plan reflects this reality through its gridded formality, softened by landscaped islands and a thoughtful streetscape. Units are mixed in the plan to present a visually non-repetitive drive-through experience. From planning through unit details and landscape specs, **The Martin Architectural Group** ties each of the elements together into a cohesive, highly desirable community environment.



HARKER-MARTIN-WENTZ-SULLIVAN-RIVIELLO
THE MARTIN ARCHITECTURAL GROUP
ARCHITECTS & LAND PLANNERS

215-665-1080
240 NORTH 22ND STREET 855 S. FEDERAL HWY. SUITE 218
PHILADELPHIA, PA 19103 BOCA RATON, FL 33432

561-417-2870

