



HARKER•MARTIN•WENTZ•SULLIVAN•RIVIELLO
THE MARTIN ARCHITECTURAL GROUP
ARCHITECTS AND LAND PLANNERS

215-665-1080
240 NORTH 22ND STREET
PHILADELPHIA, PA 19103

561-417-2870
855 SOUTH FEDERAL HWY, SUITE 218
BOCA RATON, FL 33432



wood-frame value, generous plans create
IRRESISTIBLE APPEAL FOR ACTIVE ADULTS
in four stories and 50 DU/Ac

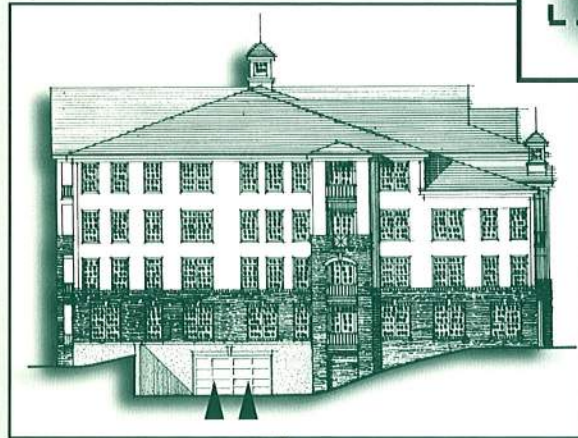
**forming new solutions,
designing new environments**

54 Prime, Diverse Units Over Parking

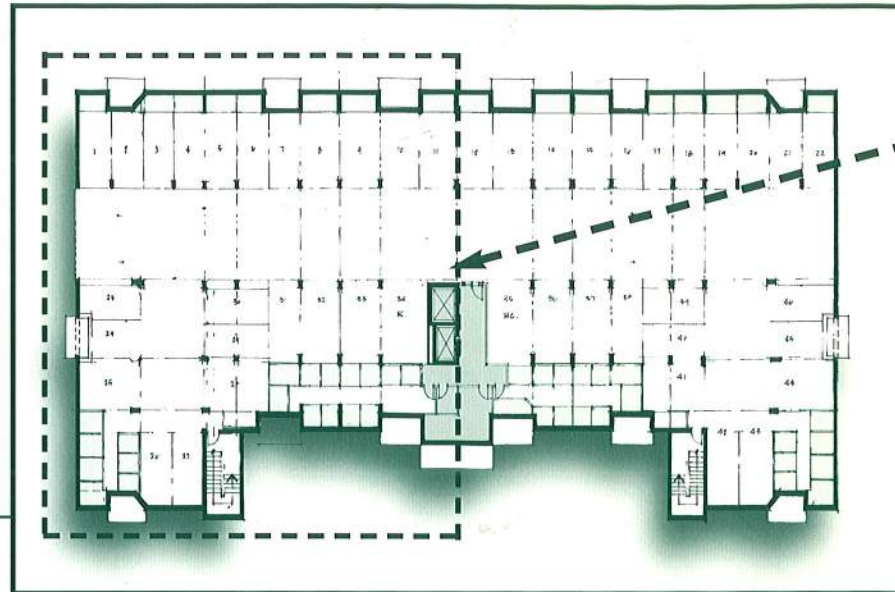
The adult market will flock to a smart, well-priced multi-family product.

Case in point is this 54-unit, wood-frame-over-parking building that sold out before completion of construction. Its twin building on site sold at the same pace.

Part of a 71-acre mixed-use town center development, this new adult community offers uncommon value, choice and quality in a burgeoning metro market.

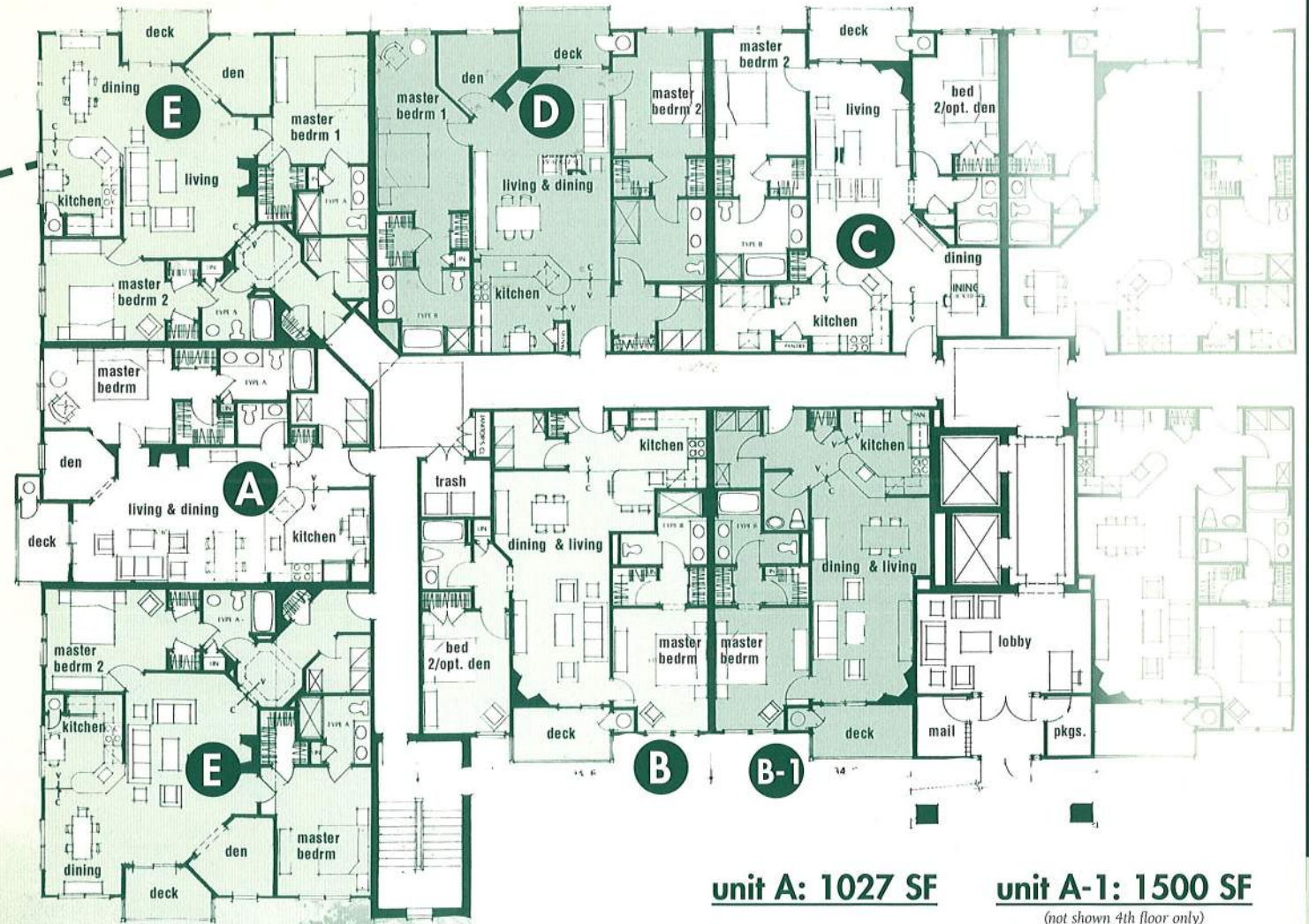


left side elevation with parking entry



building plan

For additional information on this and other pro-active designs for multi-family living, contact The Martin Architectural Group in Philadelphia at 215-665-1080 or in Boca Raton at 561-417-2870. Or see the whole story at www.MartinAIA.com.



unit A: 1027 SF

features:

- 1 bedroom w/den
- 1-1 1/2 BA
- 6 units per building**

unit A-1: 1500 SF

(not shown 4th floor only)

features:

- 2 bedrooms
- 2- 1/2 BA
- 2 units per building**

unit B: 1157 SF

features:

- 2 bedrooms
- 2 BA
- 8 units per building**

unit B-1: 864 SF

features:

- 1 bedroom
- 1- 1/2 BA
- 2 units per building**

unit B-2: 1088 SF

(not shown 2nd through 4th floor only)

features:

- 2 bedroom
- 2- 1/2 BA
- 6 units per building**

unit C: 1247 SF

features:

- 2 bedrooms
- 2 BA
- 8 units per building**

unit D: 1454 SF

features:

- dual master den
- 8 units per building**

unit E: 1380 SF

features:

- 2 bedrooms
- 2 BA corner
- 14 units per building**

*All designs of The Martin Architectural Group are protected by copyright 2001.

forming new solutions, designing new environments

A series of contemporary planning & design concepts for a diversity of attached markets

multi-family