



HARKER•MARTIN•STAINES•WENTZ•GIARDINO
THE MARTIN ARCHITECTURAL GROUP
ARCHITECTS & LAND PLANNERS

215-665-1080 FAX 215-563-7818
240 N 22ND STREET
PHILADELPHIA, PA 19103

561-417-2870 FAX 561-417-2878
855 S FEDERAL HWY STE. 218
BOCA RATON, FL 33432



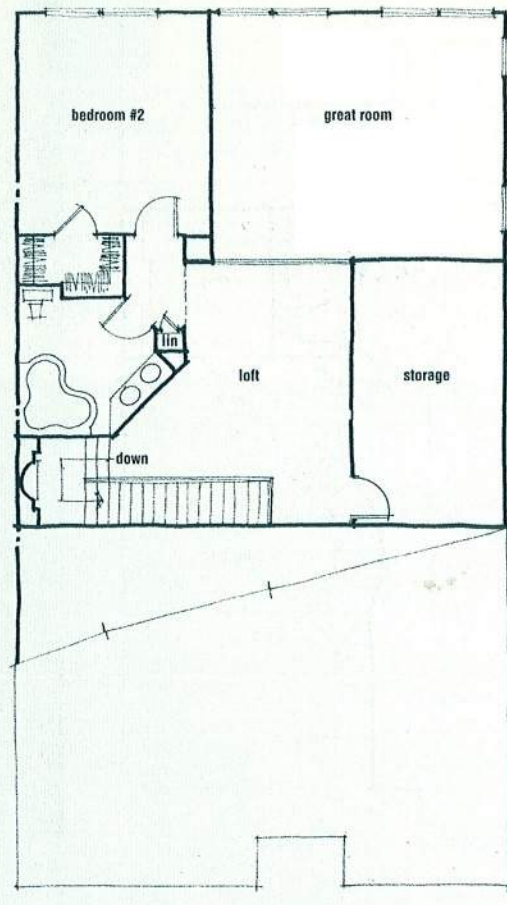
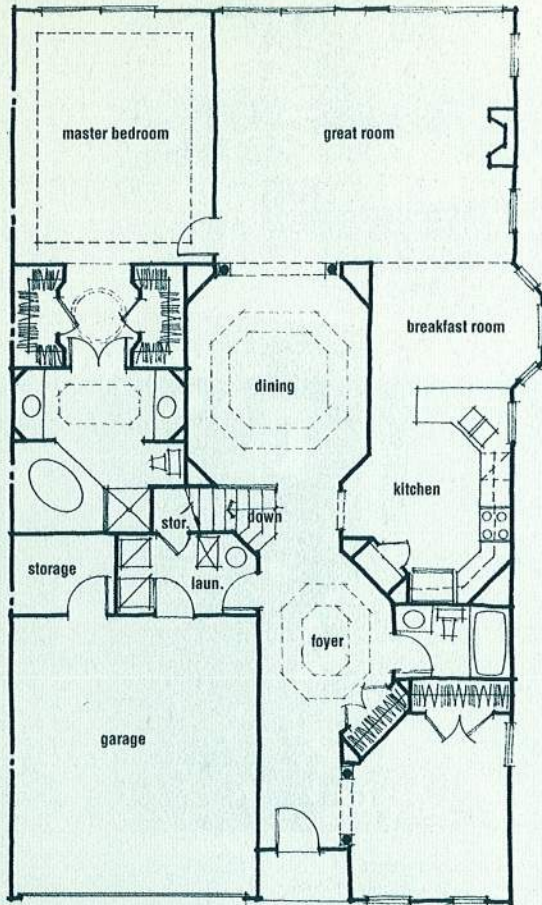
quality of detail creates
LAKEFRONT TOWNHOMES
on extraordinary site

forming new solutions,
designing new environments

2524 sf unit A:

1st floor

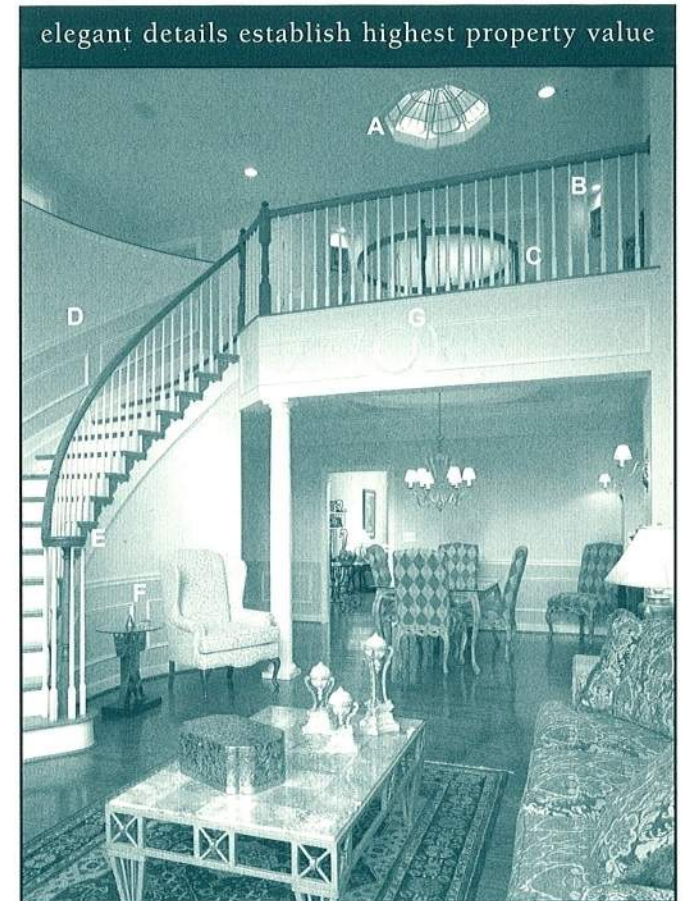
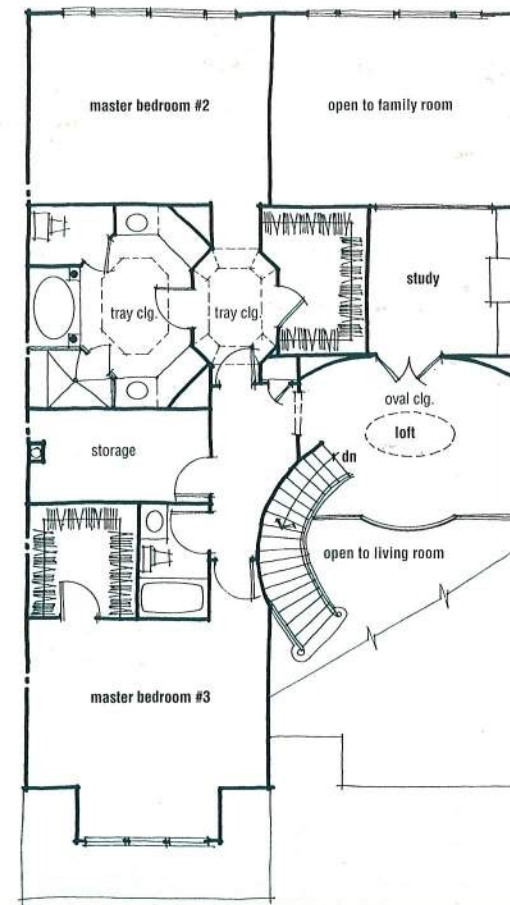
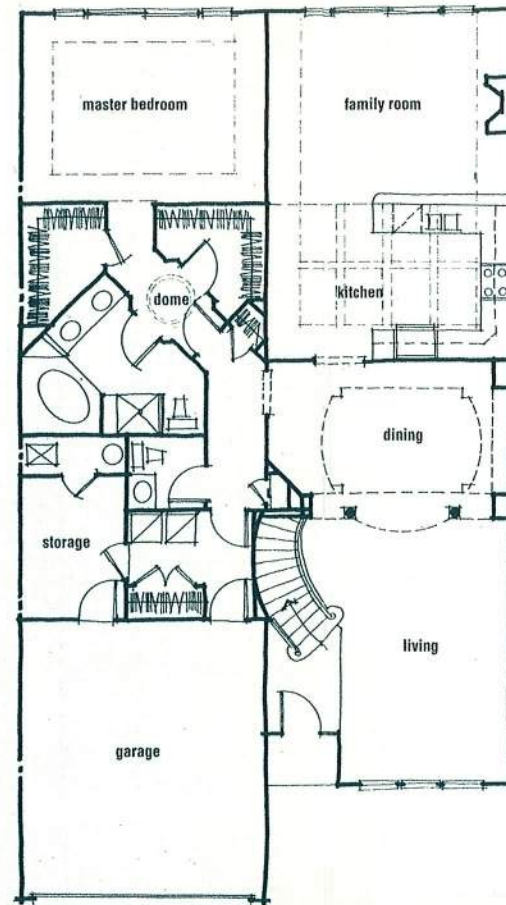
2nd floor



3252 sf unit B:

1st floor

2nd floor



- A. octagonal stained-glass skylight
- B. gallery display alcoves and studio lighting
- C. rotunda presentation for upper-level library
- D. wainscot-finish stair well
- E. custom fabricated and formed banister
- F. curved continuous wainscot throughout formal rooms
- G. applique fascia detail echoes wainscot

Residences set the quality standard for mixed-use redevelopment

As the first residential phase of a riverfront redevelopment, these townhomes were designed and built to establish the benchmark of value and quality materials for all subsequent construction, both residential and commercial. As an illustration, the townhomes do not offer particularly large rooms. Yet with properly proportioned volume, with skylit lofts and dining rooms, with coffered and tray ceilings throughout, the rooms feel grand and accomplished, and even the transitional spaces feel important and considered.

As a whole, this development is the largest mixed-use effort in Baltimore County, Maryland. Our plan provides close to 1 million GSF of build-to-suit high-tech office / commercial space and a 200-room hotel. And besides the townhomes, 108 executive condo flats in six four-story buildings are also clustered along the riverbank.

All in all, a great redevelopment story...great for the region, great for the site, great for the developer. For the complete master planning picture or for more detail on this and other pro-active multi-family designs, call **The Martini Architectural Group** in Philadelphia at 215-665-1080 or in Boca Raton at 561-417-2870.



*All designs of The Martini Architectural Group are protected by copyright 2001. Site Photos by Eric Kieley Photography

forming new solutions, designing new environments

A series of contemporary planning & design concepts for a diversity of attached markets

multi-family

elegant details establish highest property value