



HARKER•MARTIN•STAINES•WENTZ•GIARDINO  
**THE MARTIN ARCHITECTURAL GROUP**  
ARCHITECTS & LAND PLANNERS

215-665-1080 FAX 215-563-7818  
240 N 22ND STREET  
PHILADELPHIA, PA 19103

561-417-2870 FAX 561-417-2878  
855 S FEDERAL HWY STE. 218  
BOCA RATON, FL 33432



**forming new solutions,  
designing new environments**

smart building nets  
**OVER 30 LUXURY DU/Ac**  
with generous plans

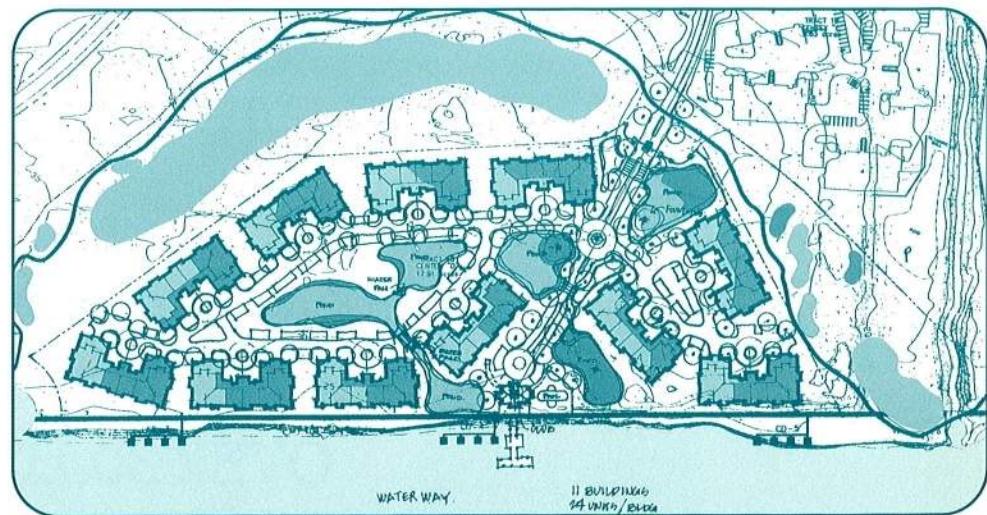




## Luxury Resort Design Can Travel

Though designed for a snowbird/destination resort, the combination of plans, storage, view orientation and secure parking will sell in any executive market. Even the common areas and hallways speak of achievement, detail and exclusivity. And the 26-residence building nets the developer over 30 DU/Ac with three stories of wood-frame over concrete deck. A winner all around. For additional information on this and other pro-active designs for multi-family living, contact

The Martin Architectural Group in Boca Raton at 561-417-2870 or in Philadelphia at 215-665-1080. Or see the whole story at [www.MartinAIA.com](http://www.MartinAIA.com).



### **unit A: 1403 SF**

**features:**  
2BR / 2BA  
92 SF balcony  
**8 units per building**

### **unit C: 1937 SF**

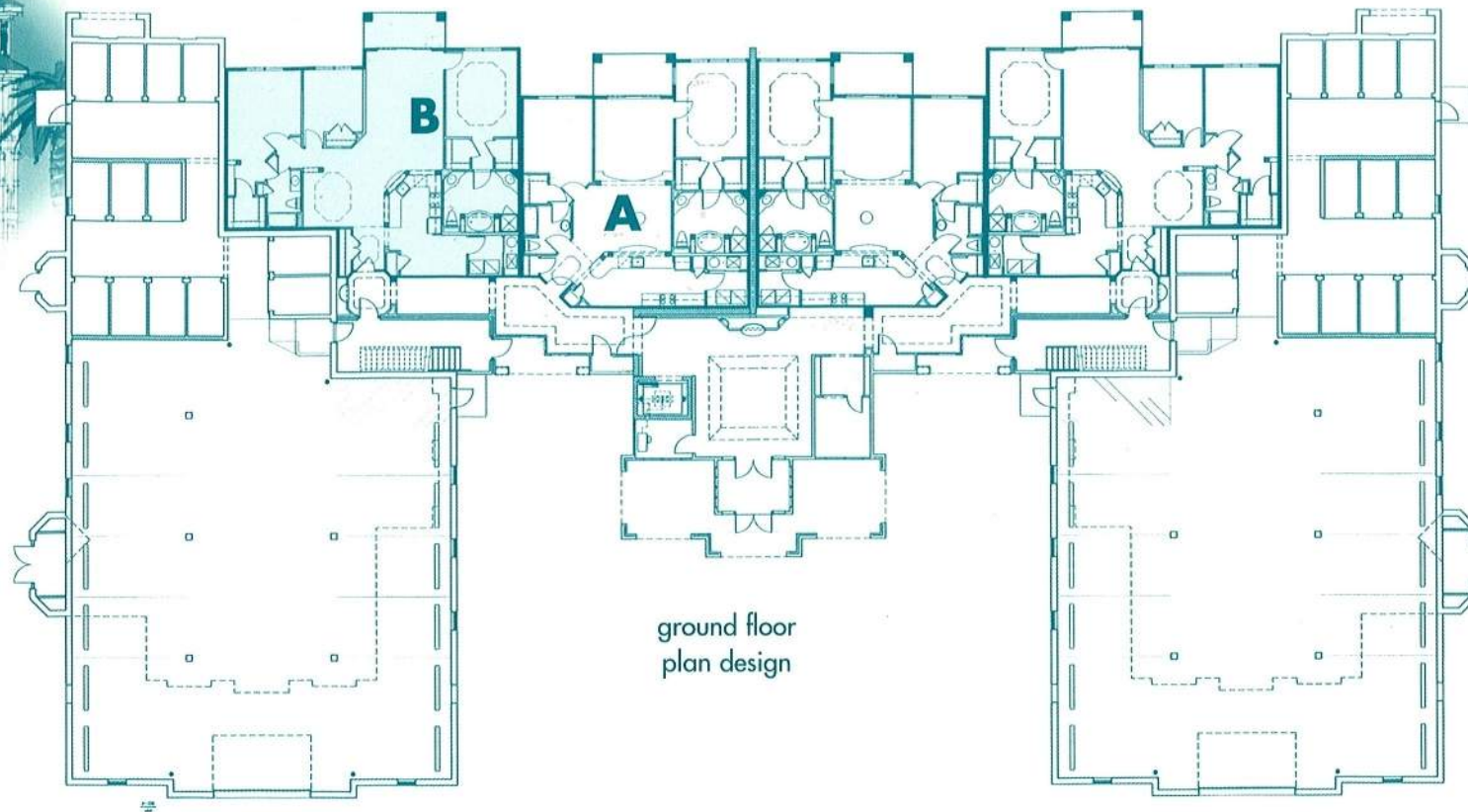
**features:**  
2BR / Den / 2BA  
112 SF balcony  
3-sided view  
**4 units per building**

### **unit B: 1637 SF**

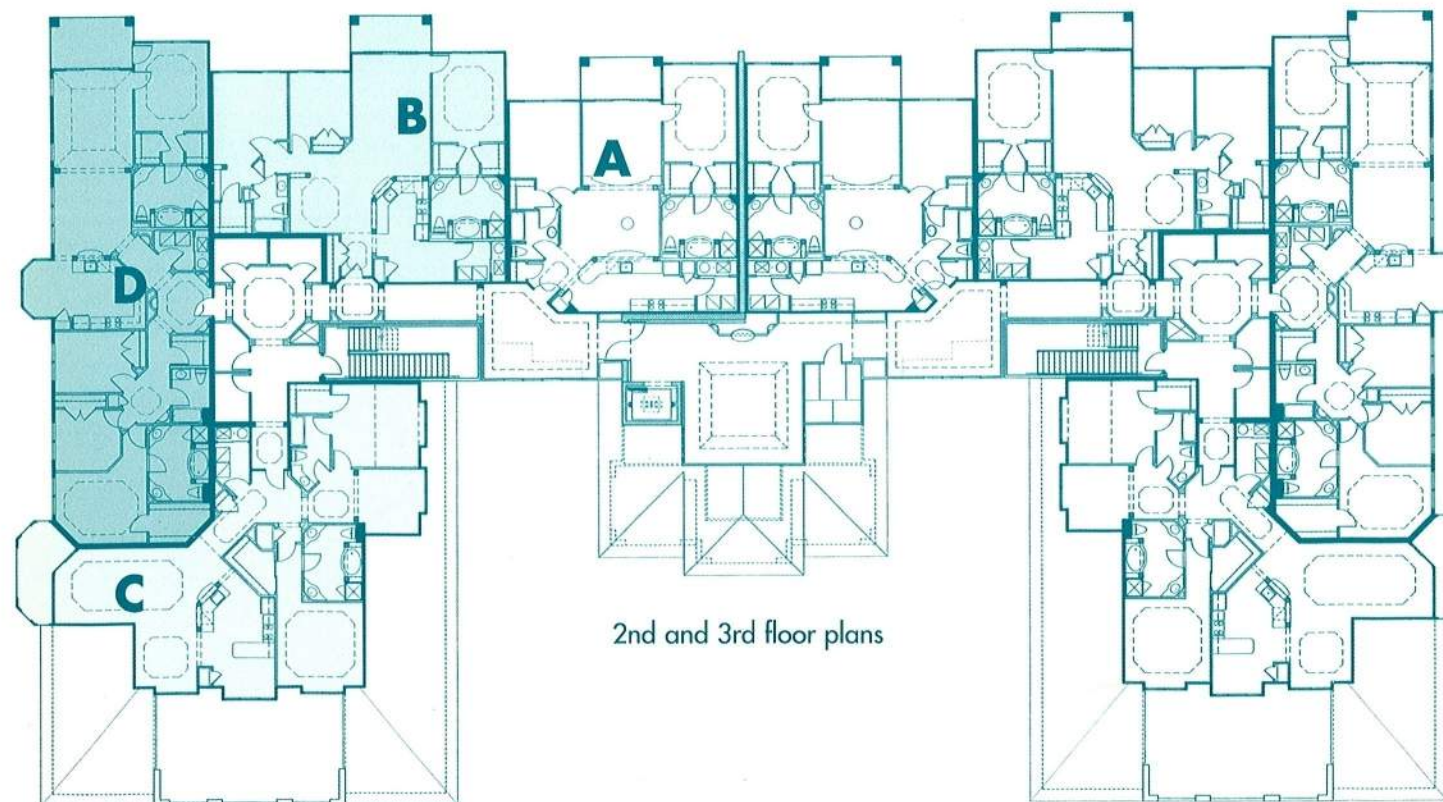
**features:**  
3BR / 2BA  
82 SF balcony  
**8 units per building**

### **unit D: 2104 SF**

**features:**  
3BR / Dual Master / 3BA  
(4BR option)  
146 SF balcony  
**6 units per building**



ground floor  
plan design



2nd and 3rd floor plans

\*All designs of The Martin Architectural Group are protected by copyright 2001.

forming new solutions, designing new environments

A series of contemporary planning & design  
concepts for a diversity of attached markets

multi-family